

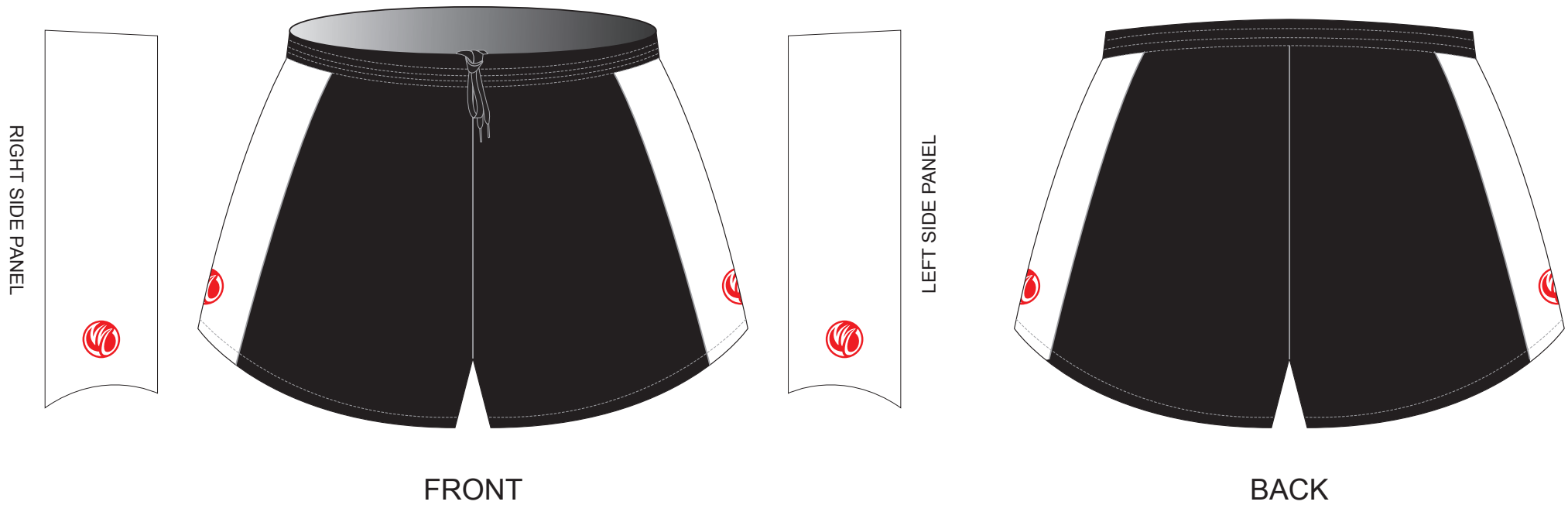
CE001 Running Shorts

CUSTOMER: _____ VERSION: 1
DESIGN REQUEST NUMBER: _____ DATE: 00 / 00 / 2015
www.nimblewear.com sales@nimblewear.com



Loose Fit, with Drawstring

Please note that NIMBLEWEAR logo must appear on the side panels.



COLORS USED:



FLATLOCK COLOR OPTIONS:



- This template can be edited with vector graphic software programs. Adobe Illustrator CS5 is recommended.
- All logos must be provided in vector format and all fonts must be converted into outline.
- The color on-screen may vary from the finished product. To confirm the color please refer to PANTONE® MATCHING SYSTEM FORMULA GUIDE Solid Coated.
- We will try the best to match the PANTONE® colors when printing, but exact matching cannot be guaranteed, due to variation in temperature, humidity and materials.

CE002 Running Shorts

CUSTOMER: _____ VERSION: 1
DESIGN REQUEST NUMBER: _____ DATE: 00 / 00 / 2015
www.nimblewear.com sales@nimblewear.com

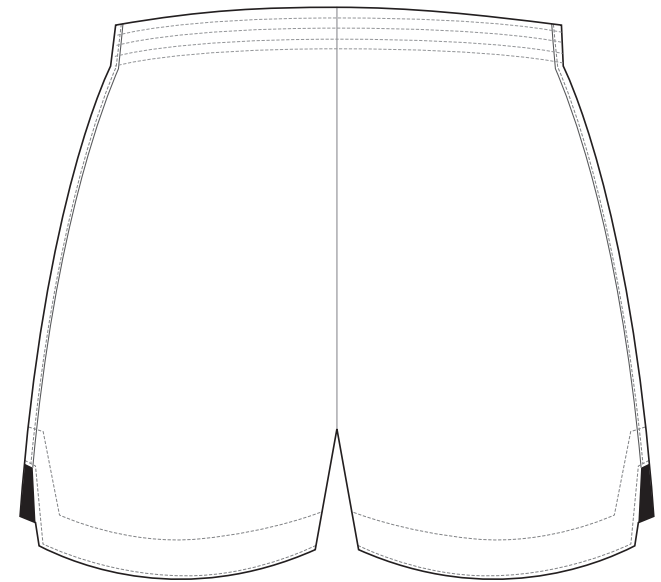


Loose Fit, with Drawstring

Please note that NIMBLEWEAR logo must appear on the front.



FRONT



BACK

COLORS USED:



FLATLOCK COLOR OPTIONS:



- This template can be edited with vector graphic software programs. Adobe Illustrator CS5 is recommended.
- All logos must be provided in vector format and all fonts must be converted into outline.
- The color on-screen may vary from the finished product. To confirm the color please refer to PANTONE® MATCHING SYSTEM FORMULA GUIDE Solid Coated.
- We will try the best to match the PANTONE® colors when printing, but exact matching cannot be guaranteed, due to variation in temperature, humidity and materials.

CE003 Running Shorts

CUSTOMER: _____ VERSION: 1
 DESIGN REQUEST NUMBER: _____ DATE: 00 / 00 / 2015
 www.nimblewear.com sales@nimblewear.com



Tight Fit, with Drawstring

Please note that NIMBLEWEAR logo must appear on the side panels.



PRE-DYED LYCRA:



PANTONE® Black C



PANTONE® Red 186C



PANTONE® Dark Navy 2767 C



PANTONE® Navy Blue 2735 C



PANTONE® Light Blue 285 C



PANTONE® Cool Grey 11C



PANTONE® Green 340 C

COLORS USED:



FLATLOCK COLOR OPTIONS:



- This template can be edited with vector graphic software programs. Adobe Illustrator CS5 is recommended.
- All logos must be provided in vector format and all fonts must be converted into outline.
- The color on-screen may vary from the finished product. To confirm the color please refer to PANTONE® MATCHING SYSTEM FORMULA GUIDE Solid Coated.
- We will try the best to match the PANTONE® colors when printing, but exact matching cannot be guaranteed, due to variation in temperature, humidity and materials.

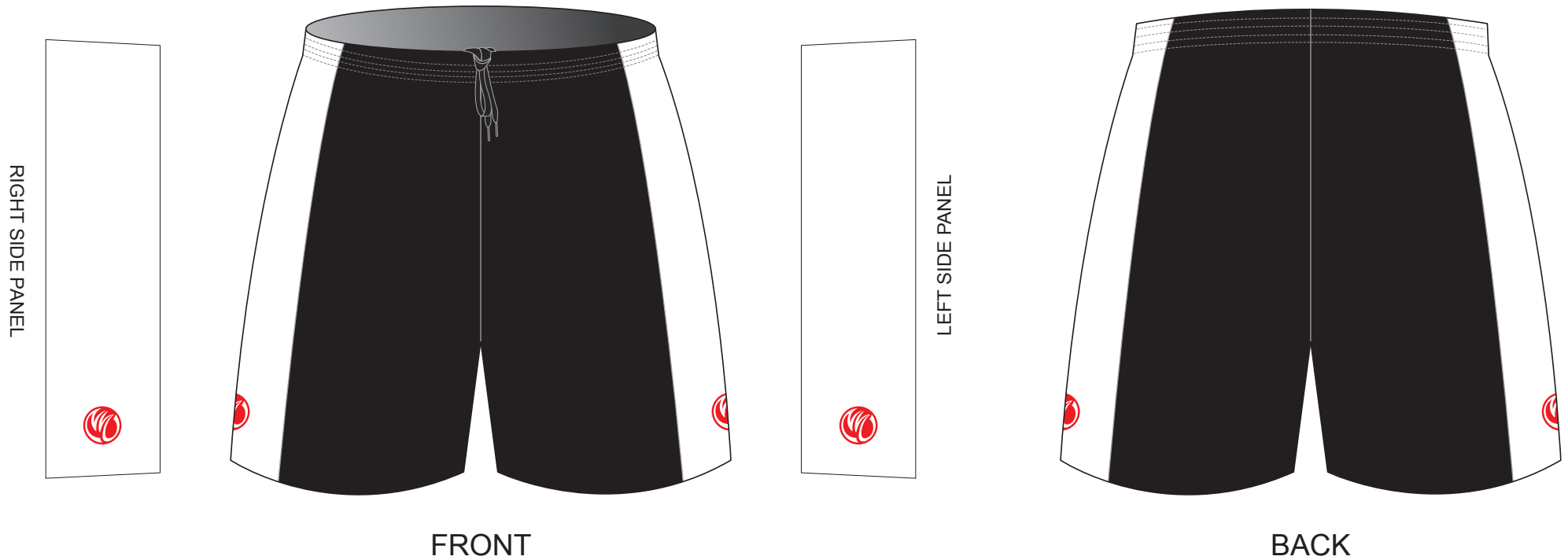
CE004 Running Shorts

CUSTOMER: _____ VERSION: 1
DESIGN REQUEST NUMBER: _____ DATE: 00 / 00 / 2015
www.nimblewear.com sales@nimblewear.com



Tight Fit, with Drawstring

Please note that NIMBLEWEAR logo must appear on the side panels.



COLORS USED:



FLATLOCK COLOR OPTIONS:



- This template can be edited with vector graphic software programs. Adobe Illustrator CS5 is recommended.
- All logos must be provided in vector format and all fonts must be converted into outline.
- The color on-screen may vary from the finished product. To confirm the color please refer to PANTONE® MATCHING SYSTEM FORMULA GUIDE Solid Coated.
- We will try the best to match the PANTONE® colors when printing, but exact matching cannot be guaranteed, due to variation in temperature, humidity and materials.

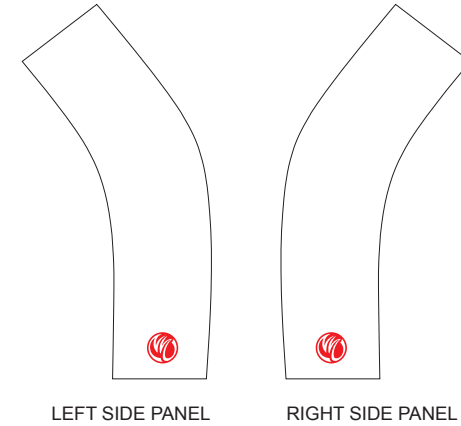
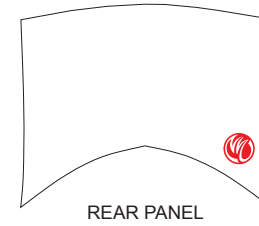
CE005 Running Shorts

CUSTOMER: _____ VERSION: 1
 DESIGN REQUEST NUMBER: _____ DATE: 00 / 00 / 2015
 www.nimblewear.com sales@nimblewear.com



Tight Fit, with Drawstring

Please note that NIMBLEWEAR logo must appear on the side panels and the back panel. Drawstring can be removed upon customer's request.



COLORS USED:



FLATLOCK COLOR OPTIONS:



- This template can be edited with vector graphic software programs. Adobe Illustrator CS5 is recommended.
- All logos must be provided in vector format and all fonts must be converted into outline.
- The color on-screen may vary from the finished product. To confirm the color please refer to PANTONE® MATCHING SYSTEM FORMULA GUIDE Solid Coated.
- We will try the best to match the PANTONE® colors when printing, but exact matching cannot be guaranteed, due to variation in temperature, humidity and materials.

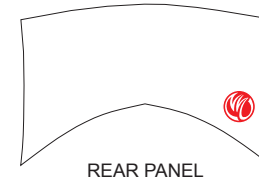
CE006 Running Shorts

CUSTOMER: _____ VERSION: 1
DESIGN REQUEST NUMBER: _____ DATE: 00 / 00 / 2015
www.nimblewear.com sales@nimblewear.com

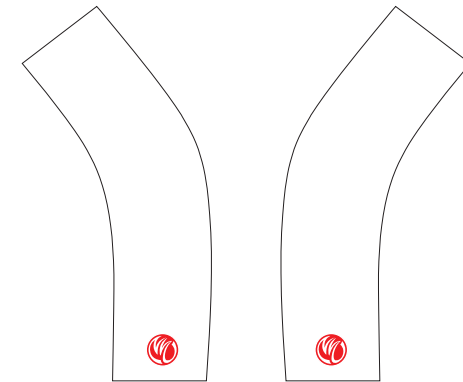


WOMEN

Please note that NIMBLEWEAR logo must appear on the side panels and the back panel.



REAR PANEL



LEFT SIDE PANEL

RIGHT SIDE PANEL

COLORS USED:



FLATLOCK COLOR OPTIONS:



- This template can be edited with vector graphic software programs. Adobe Illustrator CS5 is recommended.
- All logos must be provided in vector format and all fonts must be converted into outline.
- The color on-screen may vary from the finished product. To confirm the color please refer to PANTONE® MATCHING SYSTEM FORMULA GUIDE Solid Coated.
- We will try the best to match the PANTONE® colors when printing, but exact matching cannot be guaranteed, due to variation in temperature, humidity and materials.