

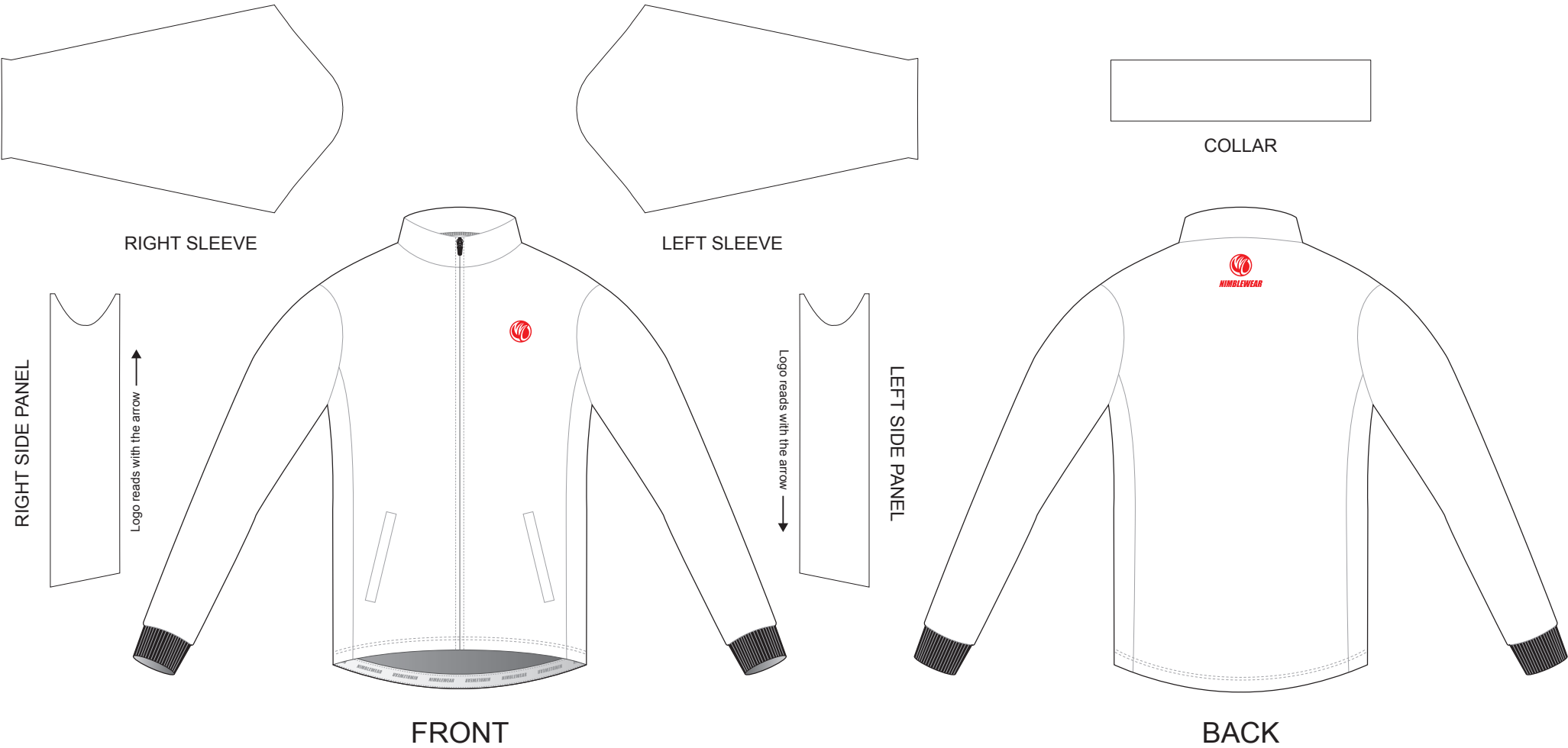
# DE001 Casual Jacket

CUSTOMER:  VERSION: 1  
DESIGN REQUEST NUMBER:  DATE: 00 / 00 / 2015  
www.nimblewear.com sales@nimblewear.com



Set-in, with Two Hand Pockets

Please note that NIMBLEWEAR logo must appear on the upper chest area (left or right) and on the center of upper back for all the tops.



## COLORS USED:



## FLATLOCK COLOR OPTIONS:



- This template can be edited with vector graphic software programs. Adobe Illustrator CS5 is recommended.
- All logos must be provided in vector format and all fonts must be converted into outline.
- The color on-screen may vary from the finished product. To confirm the color please refer to PANTONE® MATCHING SYSTEM FORMULA GUIDE Solid Coated.
- We will try the best to match the PANTONE® colors when printing, but exact matching cannot be guaranteed, due to variation in temperature, humidity and materials.

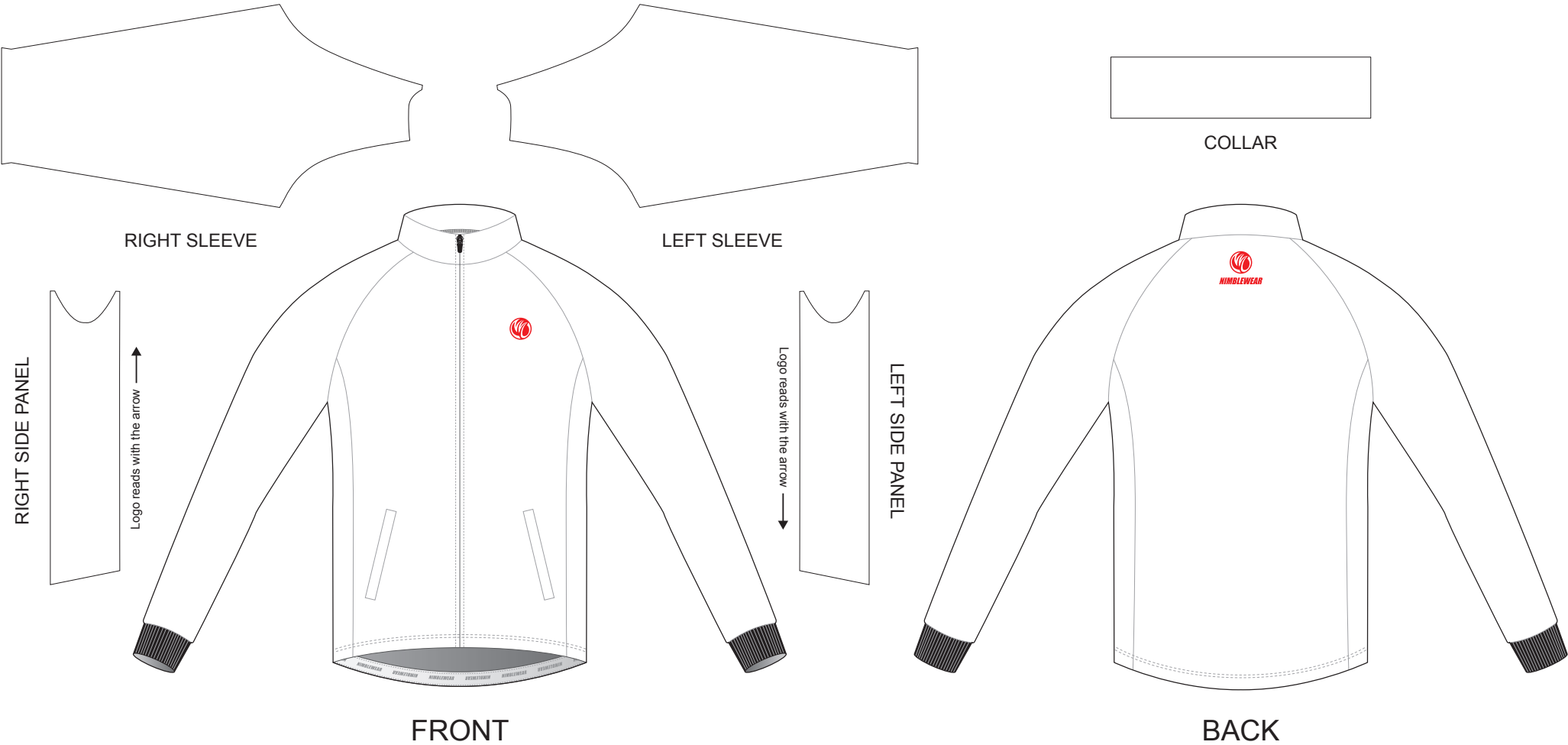
# DE002 Casual Jacket

CUSTOMER:  VERSION: 1  
DESIGN REQUEST NUMBER:  DATE: 00 / 00 / 2015  
www.nimblewear.com sales@nimblewear.com



Raglan, with Two Hand Pockets

Please note that NIMBLEWEAR logo must appear on the upper chest area (left or right) and on the center of upper back for all the tops.



### COLORS USED:



### FLATLOCK COLOR OPTIONS:



- This template can be edited with vector graphic software programs. Adobe Illustrator CS5 is recommended.
- All logos must be provided in vector format and all fonts must be converted into outline.
- The color on-screen may vary from the finished product. To confirm the color please refer to PANTONE® MATCHING SYSTEM FORMULA GUIDE Solid Coated.
- We will try the best to match the PANTONE® colors when printing, but exact matching cannot be guaranteed, due to variation in temperature, humidity and materials.

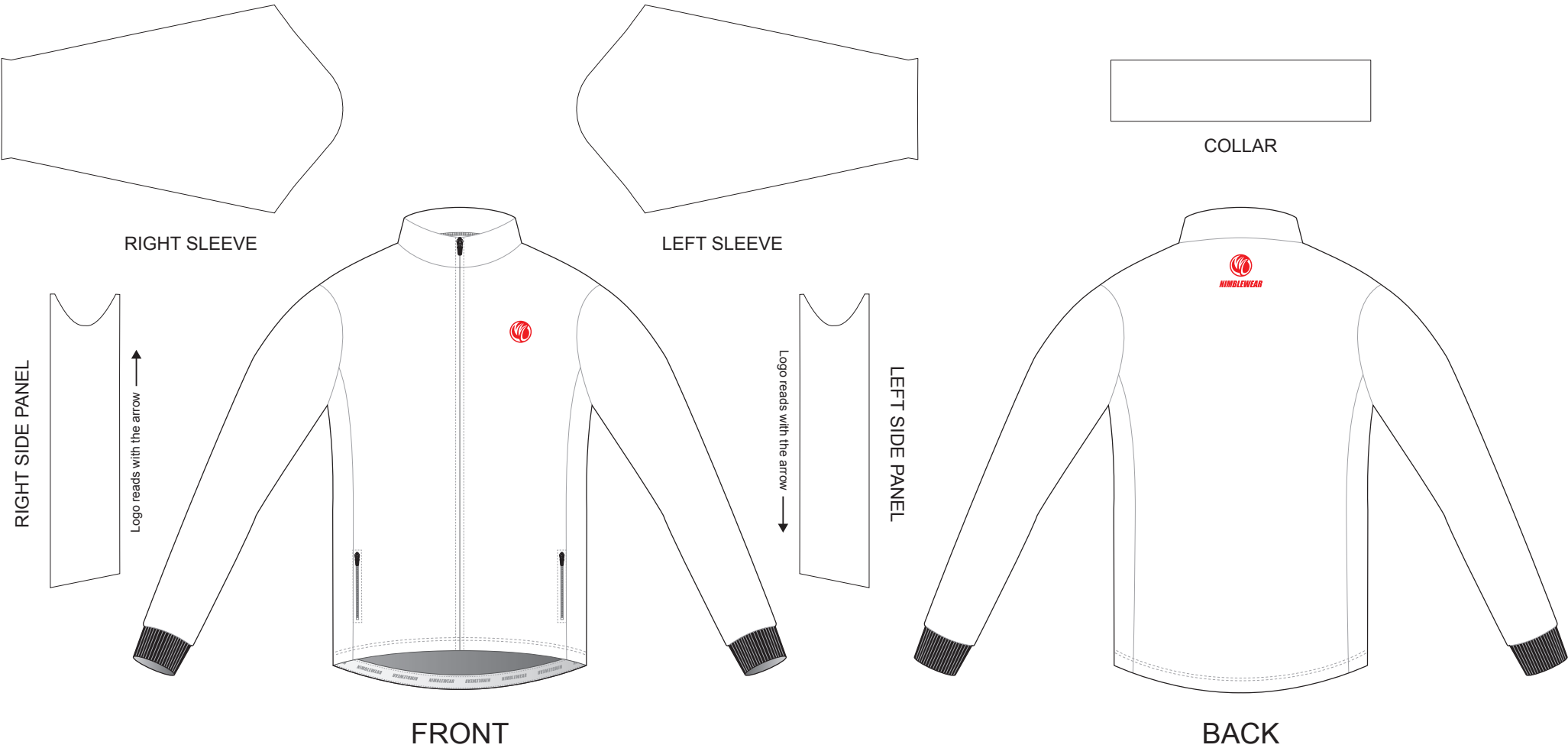
# DE003 Casual Jacket

CUSTOMER:  VERSION: 1  
DESIGN REQUEST NUMBER:  DATE: 00 / 00 / 2015  
www.nimblewear.com sales@nimblewear.com



Set-in, with Two Hand Zip Pockets

Please note that NIMBLEWEAR logo must appear on the upper chest area (left or right) and on the center of upper back for all the tops.



## COLORS USED:



## FLATLOCK COLOR OPTIONS:



• This template can be edited with vector graphic software programs. Adobe Illustrator CS5 is recommended.  
• All logos must be provided in vector format and all fonts must be converted into outline.  
• The color on-screen may vary from the finished product. To confirm the color please refer to PANTONE® MATCHING SYSTEM FORMULA GUIDE Solid Coated.  
• We will try the best to match the PANTONE® colors when printing, but exact matching cannot be guaranteed, due to variation in temperature, humidity and materials.

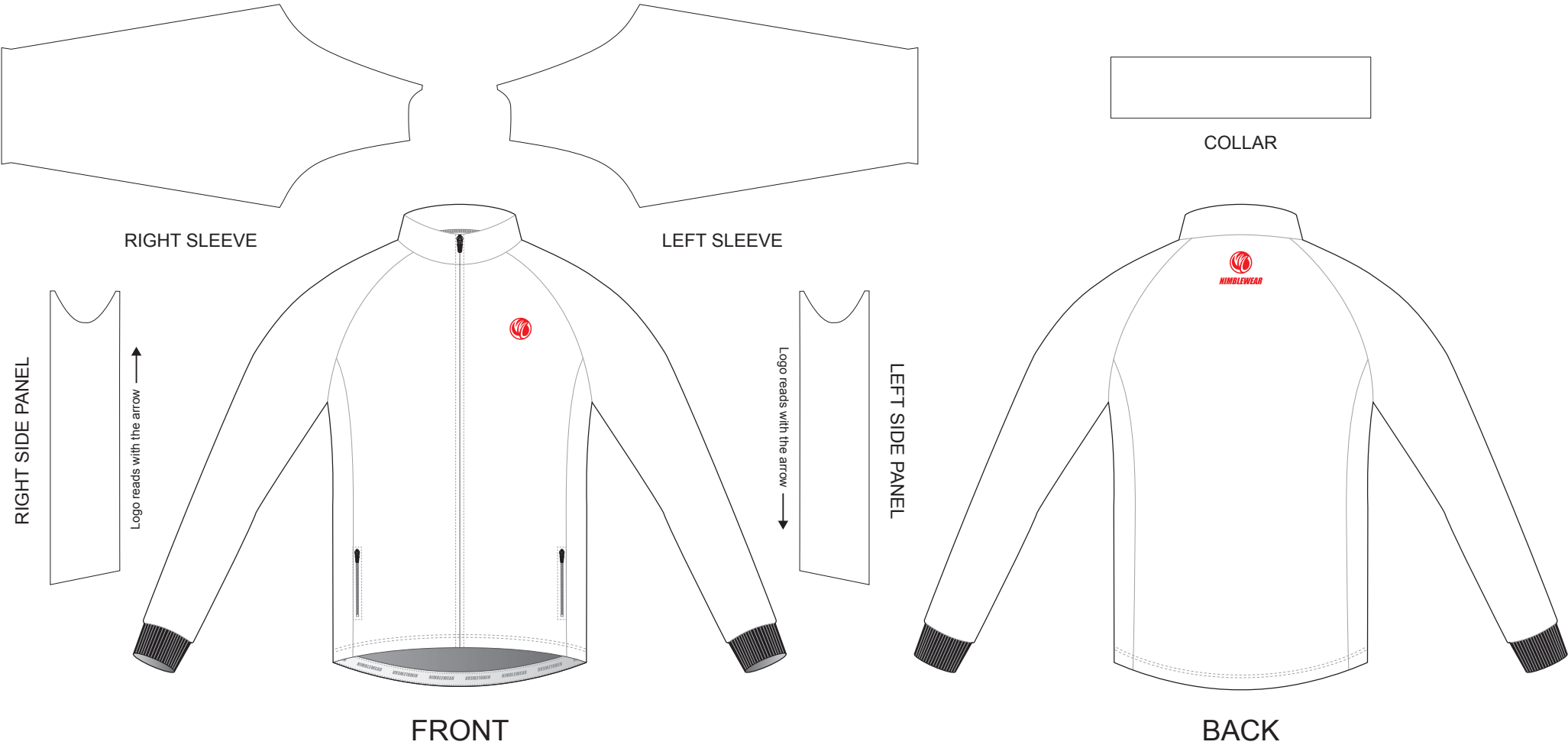
# DE004 Casual Jacket

CUSTOMER:  VERSION: 1  
DESIGN REQUEST NUMBER:  DATE: 00 / 00 / 2015  
www.nimblewear.com sales@nimblewear.com



Raglan, with Two Hand Zip Pockets

Please note that NIMBLEWEAR logo must appear on the upper chest area (left or right) and on the center of upper back for all the tops.



## COLORS USED:



## FLATLOCK COLOR OPTIONS:



- This template can be edited with vector graphic software programs. Adobe Illustrator CS5 is recommended.
- All logos must be provided in vector format and all fonts must be converted into outline.
- The color on-screen may vary from the finished product. To confirm the color please refer to PANTONE® MATCHING SYSTEM FORMULA GUIDE Solid Coated.
- We will try the best to match the PANTONE® colors when printing, but exact matching cannot be guaranteed, due to variation in temperature, humidity and materials.