

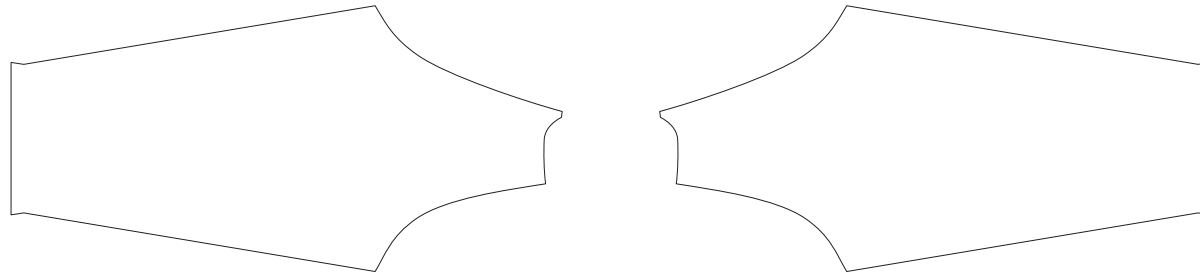
CC001 Long Sleeve Running Shirt

CUSTOMER: _____ VERSION: 1
DESIGN REQUEST NUMBER: _____ DATE: 00 / 00 / 2015
www.nimblewear.com sales@nimblewear.com



Raglan, Crew Neck, without Side Panels

Please note that NIMBLEWEAR logo must appear on the upper chest area (left or right) and on the center of upper back for all the tops.



RIGHT SLEEVE

LEFT SLEEVE



NECK TRIM



FRONT



BACK

COLORS USED:



FLATLOCK COLOR OPTIONS:



- This template can be edited with vector graphic software programs. Adobe Illustrator CS5 is recommended.
- All logos must be provided in vector format and all fonts must be converted into outline.
- The color on-screen may vary from the finished product. To confirm the color please refer to PANTONE® MATCHING SYSTEM FORMULA GUIDE Solid Coated.
- We will try the best to match the PANTONE® colors when printing, but exact matching cannot be guaranteed, due to variation in temperature, humidity and materials.

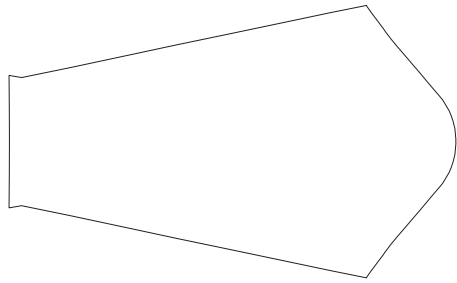
CC002 Long Sleeve Running Shirt

CUSTOMER: _____ VERSION: 1
DESIGN REQUEST NUMBER: _____ DATE: 00 / 00 / 2015
www.nimblewear.com sales@nimblewear.com

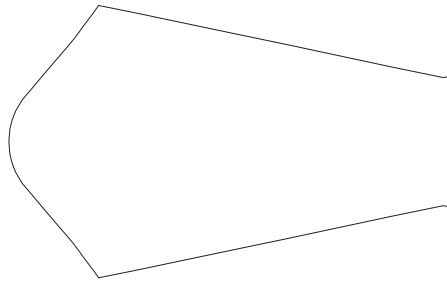


Set-in, Crew Neck, without Side Panels

Please note that NIMBLEWEAR logo must appear on the upper chest area (left or right) and on the center of upper back for all the tops.



RIGHT SLEEVE



LEFT SLEEVE



NECK TRIM



FRONT



BACK

COLORS USED:



FLATLOCK COLOR OPTIONS:



- This template can be edited with vector graphic software programs. Adobe Illustrator CS5 is recommended.
- All logos must be provided in vector format and all fonts must be converted into outline.
- The color on-screen may vary from the finished product. To confirm the color please refer to PANTONE® MATCHING SYSTEM FORMULA GUIDE Solid Coated.
- We will try the best to match the PANTONE® colors when printing, but exact matching cannot be guaranteed, due to variation in temperature, humidity and materials.

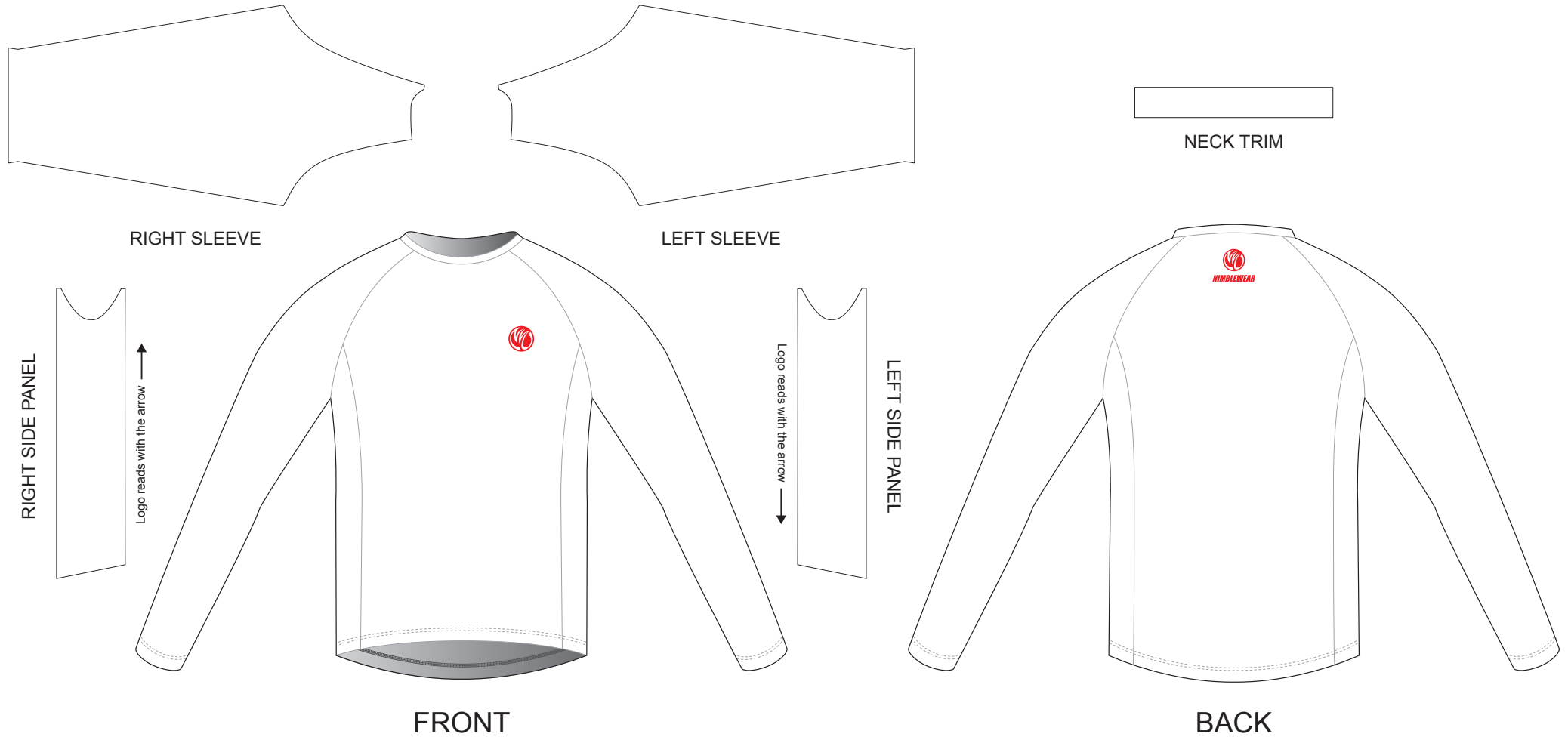
CC003 Long Sleeve Running Shirt

CUSTOMER: _____ VERSION: 1
 DESIGN REQUEST NUMBER: _____ DATE: 00 / 00 / 2015
 www.nimblewear.com sales@nimblewear.com



Raglan, Crew Neck, with Side Panels

Please note that NIMBLEWEAR logo must appear on the upper chest area (left or right) and on the center of upper back for all the tops.



COLORS USED:



FLATLOCK COLOR OPTIONS:



- This template can be edited with vector graphic software programs. Adobe Illustrator CS5 is recommended.
- All logos must be provided in vector format and all fonts must be converted into outline.
- The color on-screen may vary from the finished product. To confirm the color please refer to PANTONE® MATCHING SYSTEM FORMULA GUIDE Solid Coated.
- We will try the best to match the PANTONE® colors when printing, but exact matching cannot be guaranteed, due to variation in temperature, humidity and materials.

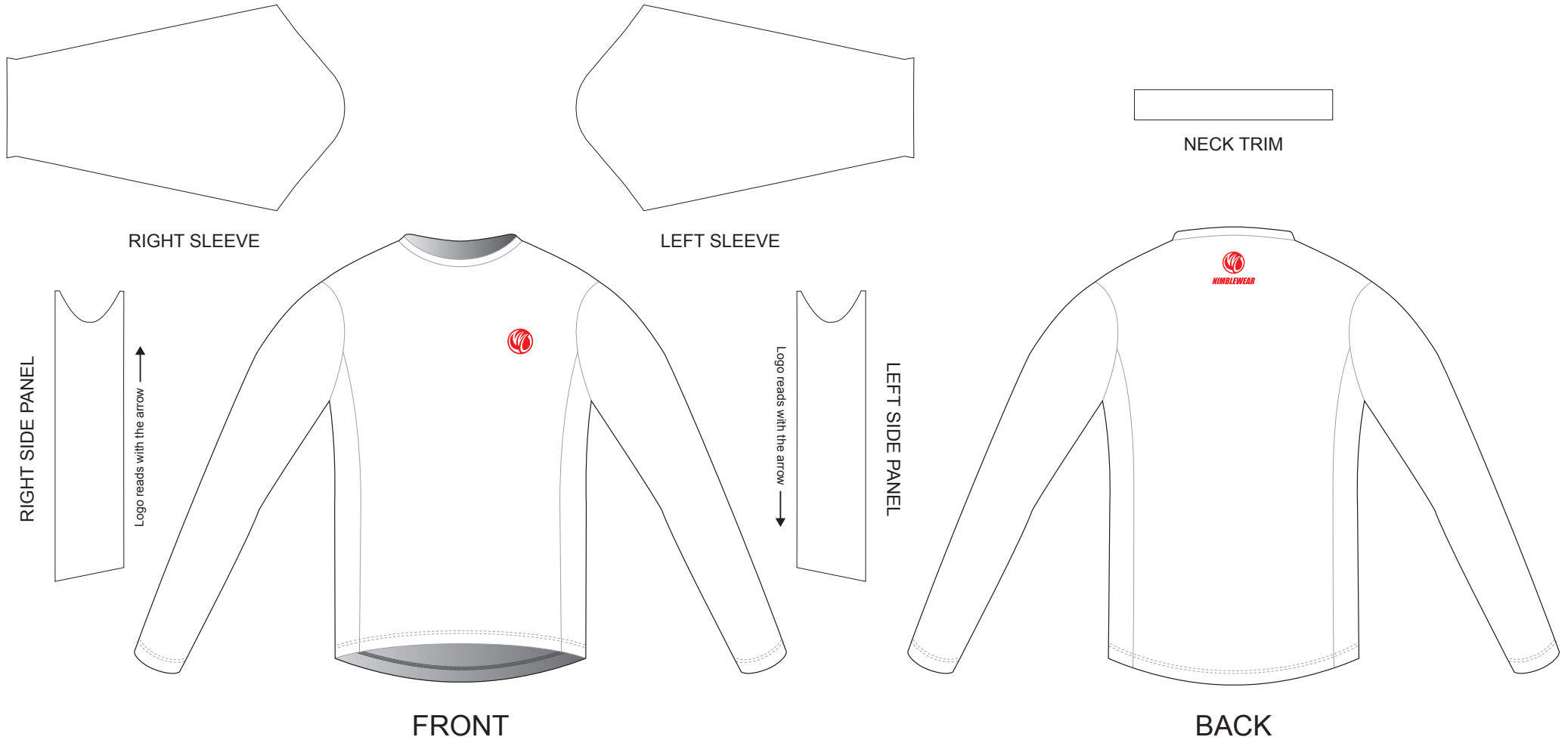
CC004 Long Sleeve Running Shirt

CUSTOMER: _____ VERSION: 1
 DESIGN REQUEST NUMBER: _____ DATE: 00 / 00 / 2015
 www.nimblewear.com sales@nimblewear.com



Set-in, Crew Neck, with Side Panels

Please note that NIMBLEWEAR logo must appear on the upper chest area (left or right) and on the center of upper back for all the tops.



COLORS USED:



FLATLOCK COLOR OPTIONS:



- This template can be edited with vector graphic software programs. Adobe Illustrator CS5 is recommended.
- All logos must be provided in vector format and all fonts must be converted into outline.
- The color on-screen may vary from the finished product. To confirm the color please refer to PANTONE® MATCHING SYSTEM FORMULA GUIDE Solid Coated.
- We will try the best to match the PANTONE® colors when printing, but exact matching cannot be guaranteed, due to variation in temperature, humidity and materials.

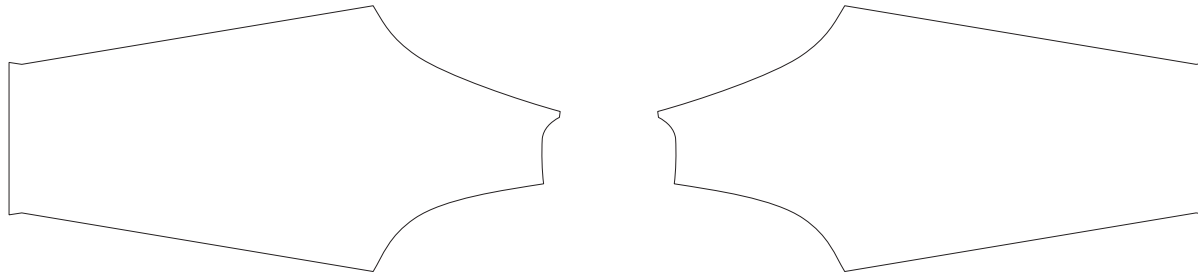
CC005 Long Sleeve Running Shirt

CUSTOMER: _____ VERSION: 1
 DESIGN REQUEST NUMBER: _____ DATE: 00 / 00 / 2015
 www.nimblewear.com sales@nimblewear.com



Raglan, Crew Neck, without Side Panels, WOMEN

Please note that NIMBLEWEAR logo must appear on the upper chest area (left or right) and on the center of upper back for all the tops.



RIGHT SLEEVE

LEFT SLEEVE



NECK TRIM



FRONT



BACK

COLORS USED:



FLATLOCK COLOR OPTIONS:



- This template can be edited with vector graphic software programs. Adobe Illustrator CS5 is recommended.
- All logos must be provided in vector format and all fonts must be converted into outline.
- The color on-screen may vary from the finished product. To confirm the color please refer to PANTONE® MATCHING SYSTEM FORMULA GUIDE Solid Coated.
- We will try the best to match the PANTONE® colors when printing, but exact matching cannot be guaranteed, due to variation in temperature, humidity and materials.

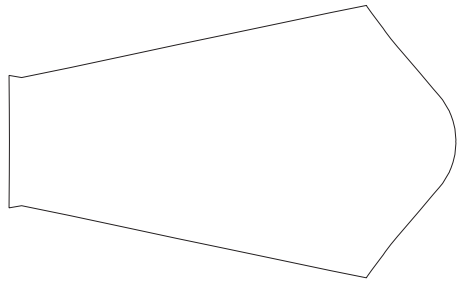
CC006 Long Sleeve Running Shirt

CUSTOMER: _____ VERSION: 1
DESIGN REQUEST NUMBER: _____ DATE: 00 / 00 / 2015
www.nimblewear.com sales@nimblewear.com

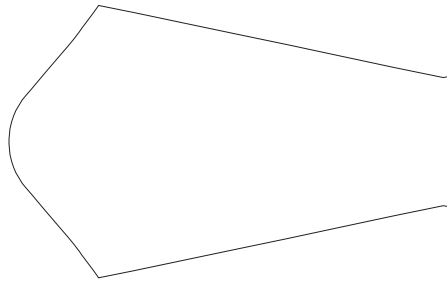


Set-in, Crew Neck, without Side Panels, WOMEN

Please note that NIMBLEWEAR logo must appear on the upper chest area (left or right) and on the center of upper back for all the tops.



RIGHT SLEEVE



LEFT SLEEVE



NECK TRIM



FRONT



BACK

COLORS USED:



FLATLOCK COLOR OPTIONS:



- This template can be edited with vector graphic software programs. Adobe Illustrator CS5 is recommended.
- All logos must be provided in vector format and all fonts must be converted into outline.
- The color on-screen may vary from the finished product. To confirm the color please refer to PANTONE® MATCHING SYSTEM FORMULA GUIDE Solid Coated.
- We will try the best to match the PANTONE® colors when printing, but exact matching cannot be guaranteed, due to variation in temperature, humidity and materials.

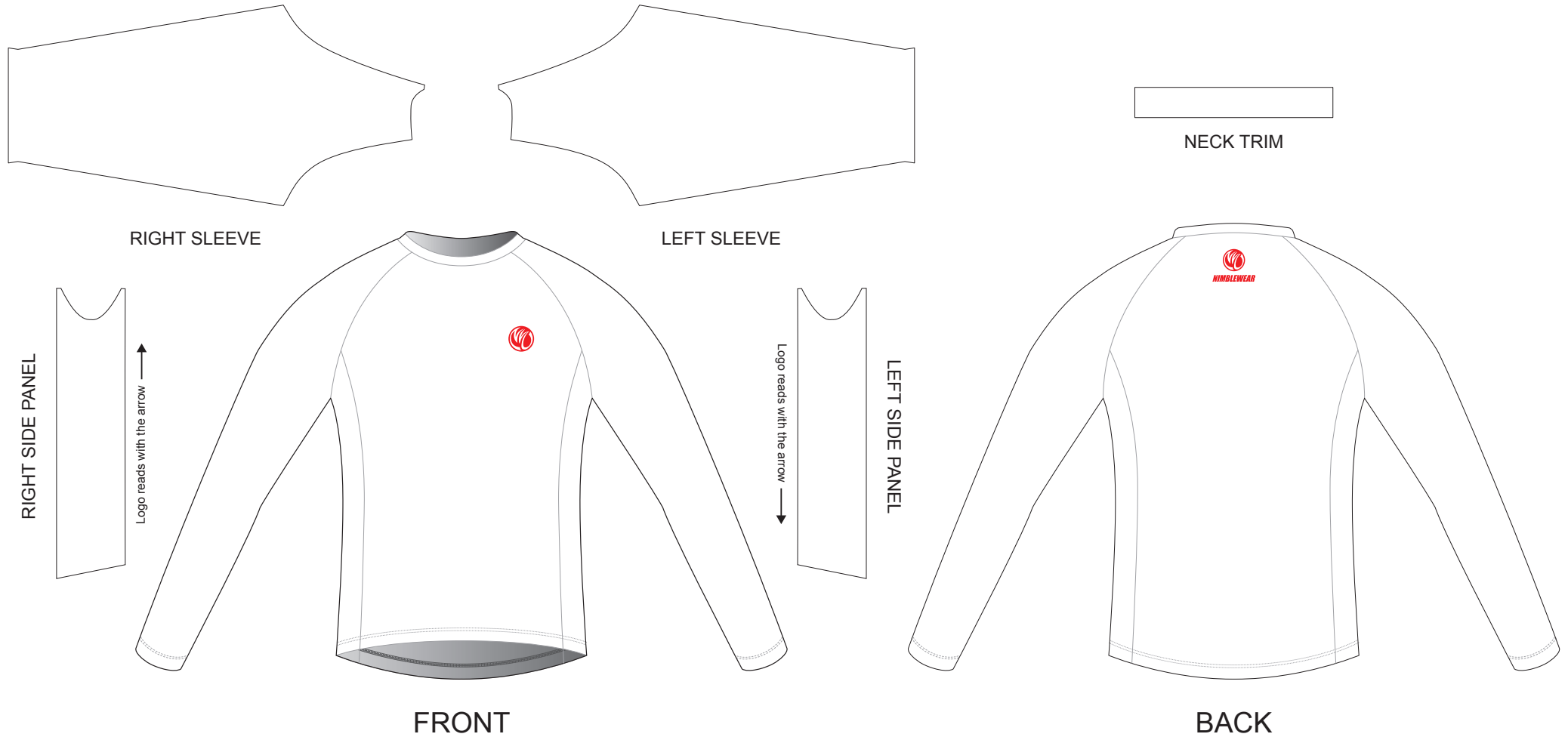
CC007 Long Sleeve Running Shirt

CUSTOMER: _____ VERSION: 1
 DESIGN REQUEST NUMBER: _____ DATE: 00 / 00 / 2015
 www.nimblewear.com sales@nimblewear.com



Raglan, Crew Neck, with Side Panels, WOMEN

Please note that NIMBLEWEAR logo must appear on the upper chest area (left or right) and on the center of upper back for all the tops.



COLORS USED:



FLATLOCK COLOR OPTIONS:



- This template can be edited with vector graphic software programs. Adobe Illustrator CS5 is recommended.
- All logos must be provided in vector format and all fonts must be converted into outline.
- The color on-screen may vary from the finished product. To confirm the color please refer to PANTONE® MATCHING SYSTEM FORMULA GUIDE Solid Coated.
- We will try the best to match the PANTONE® colors when printing, but exact matching cannot be guaranteed, due to variation in temperature, humidity and materials.

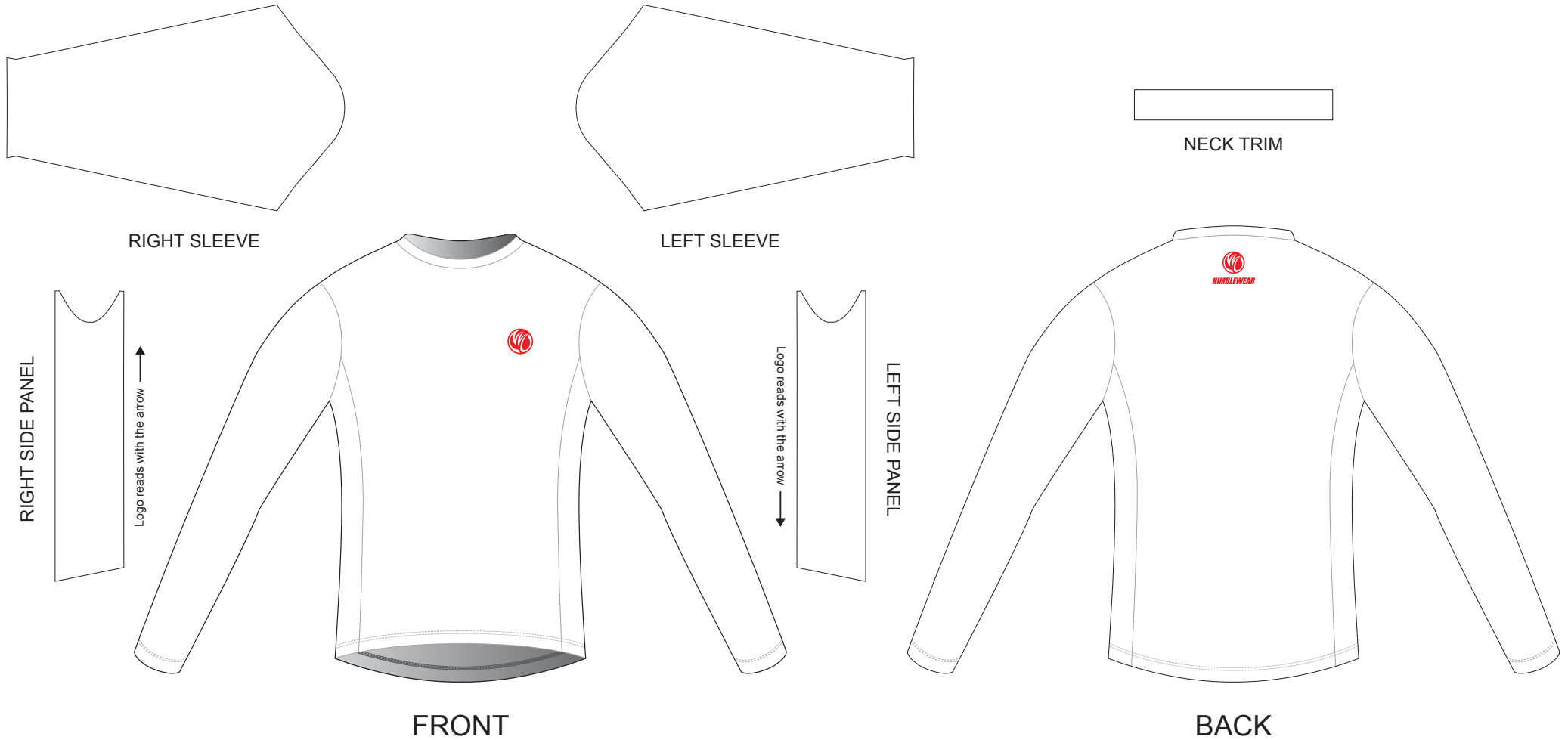
CC008 Long Sleeve Running Shirt

CUSTOMER: _____ VERSION: 1
 DESIGN REQUEST NUMBER: _____ DATE: 00 / 00 / 2015
 www.nimblewear.com sales@nimblewear.com



Set-in, Crew Neck, with Side Panels, WOMEN

Please note that NIMBLEWEAR logo must appear on the upper chest area (left or right) and on the center of upper back for all the tops.



COLORS USED:



FLATLOCK COLOR OPTIONS:



- This template can be edited with vector graphic software programs. Adobe Illustrator CS5 is recommended.
- All logos must be provided in vector format and all fonts must be converted into outline.
- The color on-screen may vary from the finished product. To confirm the color please refer to PANTONE® MATCHING SYSTEM FORMULA GUIDE Solid Coated.
- We will try the best to match the PANTONE® colors when printing, but exact matching cannot be guaranteed, due to variation in temperature, humidity and materials.